

LPGenius
from

CALOR



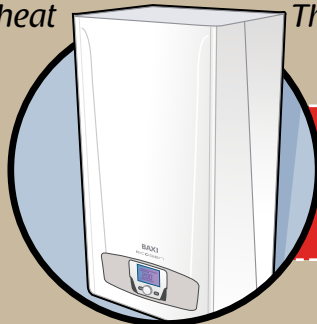
The LPG Baxi Ecogen™ boiler hits the countryside

Nestled in the heart of Nottingham's countryside, Lodge Farm is now home to the new LPG Baxi Ecogen micro-CHP (combined heat and power) boiler. The Ecogen provides heating, hot water and electricity to a newly built summerhouse with a pool, sauna, hot tub, kitchen and living area.

Lodge Farm is located in a non mains gas area and the farm's owner, Russell Chapman, was looking for the best option to heat his pool and supply power to the other utilities. Russell opted for underground LPG tanks and the LPG Baxi Ecogen boiler. "Installing an LPG Baxi Ecogen offered us the chance to be even more environmentally friendly."

The LPG Baxi Ecogen is a micro-CHP appliance available to anyone using LPG in the countryside.

The boiler looks just like a normal wall hung boiler, but as well as providing



"Installing an LPG Baxi Ecogen offered us the chance to be even more environmentally friendly."

highly efficient central heating and hot water, it also generates electricity.

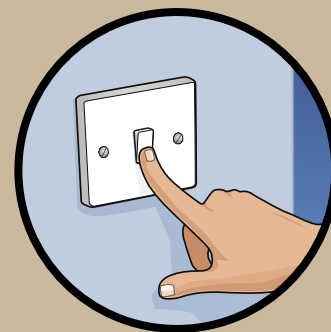
The LPG Baxi Ecogen represents a big change in efficient fuel use. Homeowners can generate electricity for use in their own home and any surplus can be sold

Rural homeowners can generate their own electricity reducing electricity bills and their carbon footprint.*

back to the national grid.* As part of the Government's feed-in-tariff (FIT), householders can earn up to 10 pence for each kW they generate and a further 3 pence per kW for any electricity not used in the home.†

In Russell's case, the boiler installed for his swimming pool creates 1kw of electricity per hour. This keeps the pool at a consistent temperature, heats the sauna and hot tub, powers the immersion heater, and lights the summerhouse.

Russell has been delighted with the result. "Although the Ecogen offers an environmentally sound proposition, for me the best thing is being able to leave it to its own devices. Despite the broad range of applications that the Ecogen powers, I rarely need to get involved with the boiler and it was easy to have installed. I don't even have to worry about running out of LPG, as the sophisticated Calor 'Think Tank®' telemetry system built into the underground tanks can recognise when the gas is running low and then it automatically orders a delivery.** I would definitely recommend installing an LPG Baxi Ecogen and am looking at switching to one for the main farmhouse."

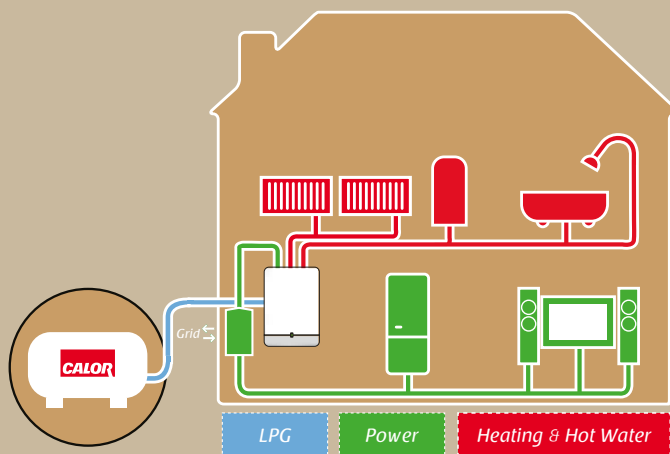


Calor, the UK's leading supplier of LPG, supplies off-grid homes with the Baxi Ecogen system.

Steve Sulley, National Bulk Sales Manager for Calor said, "The Ecogen allows rural homeowners to generate their own electricity and reduce electricity bills and carbon emissions.* Calor has been delivering exceptional energy solutions for off-mains gas areas for 75 years.

We are continually investing in new technology to provide sustainable heating solutions to ensure we play a pivotal role in the eco-centric homes of the future. We're delighted that the installation at Russell's swimming pool proved to be such a success."

Calor is currently the only LPG supplier whose installer network, CalorForce, is registered under the Microgeneration Certification Scheme (MCS).† The LPG Baxi Ecogen™ boiler must be installed by an MCS registered installer in order to be eligible for the FITs.



If you would like to know more or would like one of our CHP representatives to visit you, please contact us on 0800 022 4146 or visit calor.co.uk/ecogen

* Based on official PAS67 and APM results, April 2010 (compared to a SEDBUK Band G rated boiler, a G rated boiler having the lowest efficiency). Actual savings and carbon reduction may vary considerably dependent upon usage profiles. † Prices paid under FIT are correct at the time of print and are subject to change without further notice. Prices of electricity are the typical prices for electricity at the time of print; they are given as an illustration only and may vary depending upon usage profiles; they are subject to change and subject to individual electricity suppliers terms and conditions.

** Not available for all tank sizes and subject to site visit. Installation if a Think Tank® telemetry system does not guarantee a continual supply in all circumstances.

† Correct at the time of printing.

LPG Genius
from **CALOR**